

Industry Products Group

Life is better
in Motion



About Johnson Electric

Founded
in **1959**

Stock code

179

Listed on the Hong Kong
Stock Exchange since 1984

PROVEN FINANCIAL STABILITY

Generating Total Sales Revenue

US\$ 3.8 billion

Net income

US\$ 229 million

GLOBAL FOOTPRINT

Operating in

22 countries

across

4 continents

Providing motion solutions to over

1,600+ customers

Employing over

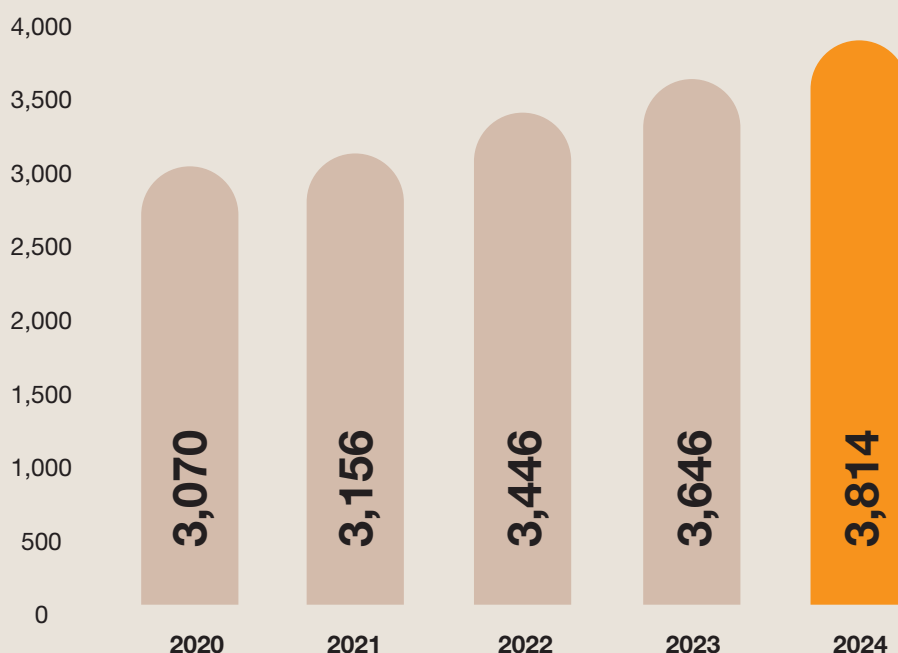
30,000 people

including

1,600+ engineers

Total group sales

in US\$ million



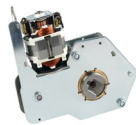
Global leader in motion **solutions**



Motors



Pumps & Valves



Operating Mechanism



Switches



Solenoids



Flexible Electronics

Engineering **expert** in focus industries



IPG
Industry
Products
Group



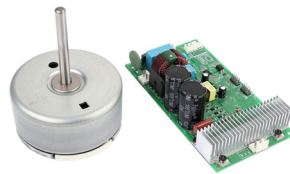
APG
Automotive
Products
Group

SERVING WORLD CLASS CUSTOMERS ACROSS DIVERSIFIED INDUSTRIES



Industry products

Motors



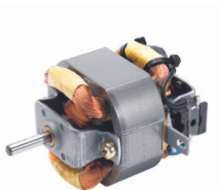
EC Motors (Brushless)

Diameter options ranging from 32mm to 123mm with power capabilities reaching up to 2500W



DC Motors

Comprehensive selection of low voltage and high voltage DC motor platforms



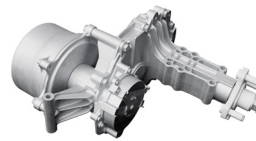
AC Motors

Extensive array of universal, shaded pole, and synchronous AC motor platforms



Stepper and Synchronous Motors

Starting from 20mm diameter the linear and rotary motors offer extended lifespan, high reliability, low noise, and various motor and gearbox combinations



Traction Solutions

Traction motorgears available with torque ranging from 1.7Nm to 100Nm, for applications including Lawn mowers, agriculture robots, and other small vehicles



Blowers

Best choice of low noise retrofit from AC to EC, featuring a highly efficient aerodynamic design



Gearboxes

Large range of planetary and spur gears that can be combined with various motor types and sizes, providing a wide torque range up to 20Nm



Tubular Motors

25mm and 45mm tubular motor subsystems, with torque up to 20Nm, designed for seamless integration in smart home plug-and-play systems



Piezo Motors and Subsystems

Ultra-high accuracy with a wide dynamic range of speed, from several microns per second to 500mm/sec



Piezo Stages

Powered by ultrasonic standing wave piezo motors, enabling single and multi-axis motion for a diverse range of applications

Operating Mechanism



Charging Systems

Including motor, gear, solenoid, and switch technology platforms, as well as custom solutions engineered for performance and reliability



Trip Unit

Energy-efficient magnetic latching for power-off engagement. Reliable, maintenance-free linear and rotary designs with high-speed operation

Valves & Pumps



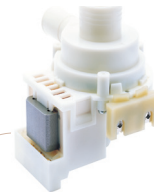
Water Valves

High-tech diverter valves K_v14 engineered for heat pumps and boilers, designed with lowest pressure drop, made in Europe



Gas Valves

Innovative ball and linear controlled gas shut-off valves achieving the highest grid efficiency with zero pressure drop



Electronic Controlled Pumps

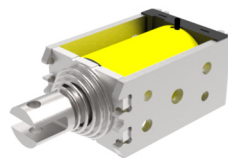
Unidirectional control to enhance pump efficiency as well as operating with minimal noise

Solenoids



Tubular Solenoids

High force for short-stroke applications with long service life of 25+ million actuations, and extreme temperature functionality: -55°C–130°C



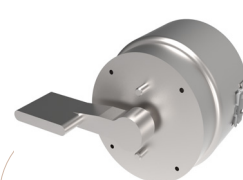
Open Frame Solenoids

Economical design for high-volume applications, continuous or intermittent duty, and on/off operations with magnetic latching options



Rotary Solenoids

High torque, high speed, long life, shock and vibration resistant, and extreme temperature functionality: -55°C–130°C



Solligence® Fast Rotary Actuator

Closed-loop controlled motion, for optimized system performance, improved throughput and longer life

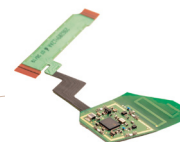
Industry products

Flexible Electronics



FPC

Highly conductive, thin, light weight electronics solution suitable for high component count and harsh environmental conditions



Components Assembly

Range of options to both PE and FPC electronics including SMT and through hole components, stiffeners and dome assemblies



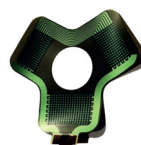
Printed Electronics

Transparent, ultra-thin and lightweight electronics product, ideal for backlit, capacitive HMI



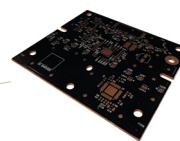
Graphic

Robust materials to suit indoor and outdoor applications fully customisable with design, colour and textures to create a unique A surface appearance



Flexible Heaters

Flexible Heaters for condensation management and de-icing



COOLflex

COOLflex for exceptional heat management solution for high powered components

Switches



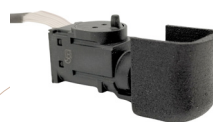
Microswitches

The largest switch product range in the market, manufactured on fully automated lines



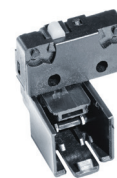
Manually Operated Switches

Highly reliable rocker switches, pushbutton or momentary switches in various sizes with sealing, including functionality such as auto-shut -off or -on or customization



Trigger Switches

Compact signal poti-trigger switches designed for BLDC applications, offering high durability and lifetime



Custom Switches and Subsystems

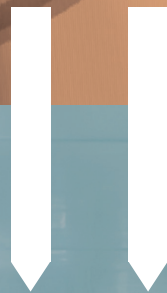
Combination of multiple technologies to provide a highly reliable solution in a one-stop-shop

Digitalization

Simulation and
Digital Twins

Product
Development System

Vertical Integration



Design
Manufacturing

Production
Tooling

Automation

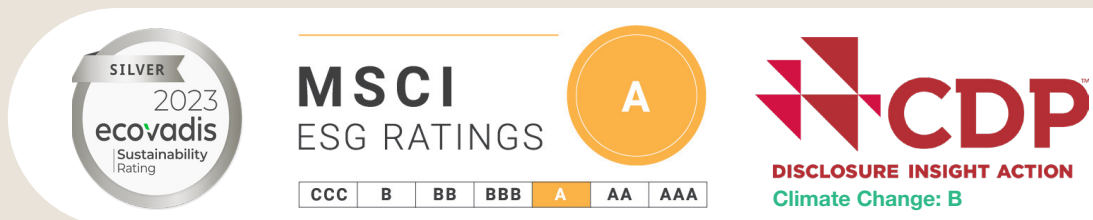
JOHNSON ELECTRIC COMMITTED TO A SUSTAINABLE FUTURE

Reached a **53% reduction** in carbon emissions from the baseline, exceeding our 2030 target of a 42% reduction

Leveraged **44% renewable energy** and enhanced energy efficiency by 2% compared to the baseline

Achieved **zero waste to landfill** for the 2nd consecutive year by recycling 93% of waste and reducing hazardous waste intensity by 19% from the baseline

Marked a **21% reduction** in water withdrawal intensity compared to the baseline



Check out our latest sustainability report here
www.johnsonelectric.com/en/sustainability

JOHNSON ELECTRIC

YOUR RELIABLE PARTNER

- Total quality assurance and reliability
- Commitment to customer success at all levels in the organization
- Assurance of supply and on-time delivery worldwide
- Global logistics support 24/7 with prompt responsiveness and flexibility
- Financial strength and long-standing supplier relationships

Certifications

- | | | |
|-------------|--------------|-------------------|
| ○ ISO 9001 | ○ ISO 50001 | ○ ISO / IEC 17025 |
| ○ ISO 14001 | ○ ISO 13485 | ○ TISAX |
| ○ ISO 45001 | ○ IATF 16949 | ○ IECQ QC 080000 |

Building **global-local** manufacture footprint



We aim to support our customers by being close to where they operate and being able to ensure fast and reliable supply and a highly responsive service. To execute this strategy, we are strengthening in-region capabilities, introducing advanced resource- and energy-efficient manufacturing technologies to our factories across Asia, North America, South America and Europe.

JOHNSON ELECTRIC YOUR TECHNOLOGY EXPERT

- Differentiation with **innovative** engineered **solutions**
- **Quality & reliability** designed-in
- **High volume** manufacturing technology
- **Technology roadmaps** for multiple technologies
- **Product roadmaps** for continuous improvement



Dedicated application engineering team to focus on customer requirements and application needs:

Engineering and Simulation Centers

- CAD design
- Electromagnetic simulations
- Injection molding simulations
- Structural simulations
- Thermal simulations
- Computational fluid dynamics

Test and Analysis Centers

- X-Ray computed tomography
- Scanning electron microscope
- Structural vibrations laser vibrometer
- Characteristics of lubricants analysis
- Vibration/ temperature testing
- Climate & life cycle
- Environmental testing
- EMC anechoic
- NVH anechoic
- Sound/ noise measurement
- Cyclic corrosion test
- Salt spray test
- Airflow test bench

Johnson Electric is dedicated to improving people's quality of life



Our shared purpose

Improve the quality of life of everyone we touch through our innovative motion systems

Our promises

- Make our customers successful with motion solutions that deliver more comfortable, safer and healthier products for end users
- Inspire our employees to grow, act with ownership and find fulfillment and meaning in the work they do
- Enrich our local communities
- Protect our environment for future generations
- Maintain financial strength and deliver sustainable growth in profits and cash generation

YOUR EXPERTS ARE DELIGHTED TO ASSIST YOU

GLOBAL HEADQUARTERS



Johnson Electric Group Headquarters
6/F, 12 Science Park East Avenue
Hong Kong Science Park
Shatin, NT, Hong Kong



Get in touch with us!

Our global sales team is at your disposal to advise and guide you toward the best solution for your project: sales@johnsonelectric.com



Find your local contacts

Locate your local sales representatives at:
<https://www.johnsonelectric.com/en/about-us/contact-us>

